

**DC INVERTER range**

**FLORIDA DCI  
Wall Mounted Split units**

***Airwell***  
**Air Conditioning**

## INVERTER RANGE

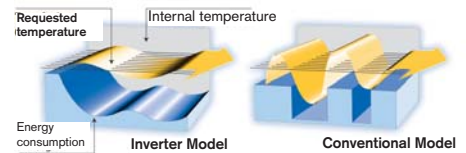
Never has technology gone so far to provide optimum user comfort. The **FLORIDA DC INVERTER** combines aesthetics, refined lines and advanced technology. An innovative design, with a rare degree of discretion and elegance mean that these wall mounted units can satisfy the latest expectations in terms of living habitats. The latest DC INVERTER technology, in combination with the use of the eco-friendly fluid **R410A** (that preserves the environment) make for optimum efficiency (class A energy label) and exceptional performance levels. (Operates in hot mode down to -15 °C). Its flexibility, user friendliness, ability to retain a constant temperature, broad operating range and extremely silent running make it an exceptional device. For perfect air treatment quality, the **FLORIDA DC INVERTER** is equipped as standard with an ioniser to provide a negative ion balance in the air.



The **FLORIDA DC INVERTER** wall-mounted split unit range is available with the ecologically friendly fluid **R410A**. This provides high energy efficiency, while preserving the ozone layer, and is easily recyclable. Its high density and high energy efficiency make for high performance coefficients, thereby providing significant energy savings.

### ■ The Inverter technology comprises:

- A DC INVERTER type variable power compressor that provides better regulation and temperature control.
- 30% energy saving.
- ultra silent operation.



### ■ The filters



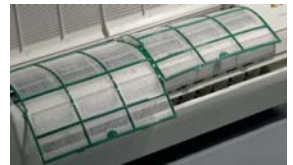
In addition to automatic air sweeping that adopts the best blowing angle for the mode selected, this range has an exceptional air treatment quality (ensured by 3 filtration levels) to provide optimum comfort to the occupants.

❖ **Standard filters or pre-filters:** eliminate the largest particles (dust or other impurities). They are regenerative (wash with soapy water), and an indicator light shows the cleaning times.

❖ **Activated carbon filter:** specially designed to neutralise odour-bearing particles (tobacco, kitchen smells, animal smells, etc.), this photo-catalytic type filter needs to be placed in the light every 6 months to restore its optimum efficiency.

❖ **Active electrostatic filter (ESF):** Electrically charged particles are attracted by a series of polarised plates that trap and collect dust, pollen, mites, bacteria, tobacco smoke. Its full efficiency is restored simply by washing in water.

#### ▼ Standard filter



#### ▼ Activated carbon filter



#### ▼ Active electrostatic filter



### ■ Ioniser

The air we breathe is electrically charged, positively and negatively. In closed and urban environments, the concentration of negative ions in the atmosphere is lower.

The AIRWELL ioniser restores the negative ion balance in our environment, to provide an exceptional level of habitat comfort.

- Average negative ions in our environment (quantity per cubic centimetre):

**Seaside** 10,000 cc

**Mountains** 5,000 cc

**City** 1,000 cc

**City centre office (average)** 50 cc



- The AIRWELL ion generator installed on the device generates a quantity of ions of between 30,000 and 50,000 per cubic centimetre.

| Energy   |   | Air conditioner                   |
|--|---|-----------------------------------|
| Manufacturer<br>Outdoor unit<br>Indoor unit  |   | <br>GC 9 DCI R410<br>ST FLO 9 DCI |
| <b>Economic</b><br>A<br>B<br>C<br>D<br>E<br>F<br>G<br><b>Uneconomic</b>  |   | <b>A</b>                          |
| Annual energy consumption, kWh in cooling mode<br><small>(the actual consumption depends on how the device is used and on the climate)</small><br>Cooling capacity kW<br><b>Energy efficiency level</b><br><small>at full load (must be as high as possible)</small> |   | 2.5<br>4.2                        |
| Type   | Cooling only<br>Cooling and heating<br>Air cooling<br>Water cooling | ←<br>←                            |
| Heating capacity kW<br>Energy performance in heating mode<br><small>A: economic G: uneconomic</small>  |   | ←<br>←                            |
| Noise<br>dB(A)   |   | 26                                |
| A detailed information sheet is included in the brochure   |   |                                   |
| <small>Standard EN<br/>           Air conditioner<br/>           "Energy labelling" directive 2002/31/EC</small>   |   |                                   |

## FLORIDA DCI Indoor units



FLO 9/12 DCI



FLO 18 DCI



FLO 24/30 DCI



### ❖ EVAPORATOR

The double bend evaporator provides a greater exchange surface area, which increases its effectiveness and efficiency, while also reducing the size.

### ❖ LCD SCREEN

Simple and user-friendly, this electro-luminescent display lets you view the following simultaneously: the various modes, the temperature setting, the ventilation speed.



### ❖ TURBINE

The aerodynamically designed tangential turbine, with a diameter greater than the conventional model, enhances the exchange process and reduces the noise level.



## DCI Outdoor units

The heat-stable polyester material structure provides a reduction in the noise level, weight and a prolonged service life. The anticorrosion treatment with a High density powder paint coating ensures high resistance whatever the operating conditions.

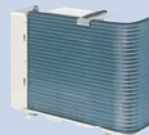


GCNG 9/12/18 DCI



### ❖ COMPRESSOR

A variable power DC INVERTER rotary type, this compressor provides high efficiency and increased acoustic isolation.



### ❖ CONDENSER

"Bluefin" hydrophilic treatment promotes the flow of condensates, while also providing corrosion protection to maintain performance levels and prolonging the service life.



### ❖ VENTILATOR MOTOR

A variable power DC INVERTER type, this high efficiency motor provides silent operation.



### ❖ PROPELLER

With 3 aerodynamic blades, the propeller offers better balance, enhances the exchange process and makes silent operation possible.

Its operational flexibility, user friendliness, ability to rapidly reach the temperature setting, silent operation, optimum ambient temperature retention and energy saving make **FLORIDA DCI** an exceptional range.

## Infrared remote control

Small-size and with excellent ergonomic properties, the AIRWELL infrared remote control is highly user friendly. It can be used to program advanced multiple functions such as choosing between 3 ventilation speeds, night-time slow running, programming, dehumidification, the energy saving function and "I feel" function, and many others. One press of a button is all it takes for the desired temperature to be obtained and controlled with a high degree of precision.



# INVERTER RANGE



## FLO DC INVERTER Series

|                                       |           | FLO 9 DC INV       | FLO 12 DC INV        | FLO 18 DC INV    | FLO 24 DC INV        | FLO 30 DC INV       |
|---------------------------------------|-----------|--------------------|----------------------|------------------|----------------------|---------------------|
| <b>Heating capacity<sup>(1)</sup></b> | <b>kW</b> | <b>3.4 (1.5-5)</b> | <b>4.3 (1.5-5.8)</b> | <b>6 (1-7.6)</b> | <b>7.6 (1.5-8.8)</b> | <b>9 (1.5-10.5)</b> |
| Power input                           | kW        | 0.81               | 1.12                 | 1.66             | 2.35                 | 2.49                |
| COP / Energy label                    |           | 4.2 / A            | 3.82 / A             | 3.61 / A         | 3.23 / C             | 3.61 / A            |

|                                       |           | FLO 9 DC INV         | FLO 12 DC INV        | FLO 18 DC INV    | FLO 24 DC INV        | FLO 30 DC INV    |
|---------------------------------------|-----------|----------------------|----------------------|------------------|----------------------|------------------|
| <b>Cooling capacity<sup>(2)</sup></b> | <b>kW</b> | <b>2.5 (1.4-3.6)</b> | <b>3.5 (1.4-4.3)</b> | <b>5 (1.5-6)</b> | <b>6.8 (1.5-7.5)</b> | <b>8 (1.5-9)</b> |
| Power input                           | kW        | 0.59                 | 0.99                 | 1.47             | 2.12                 | 2.49             |
| EER / Energy label                    |           | 4.2 / A              | 3.54 / A             | 3.40 / A         | 3.21 / A             | 3.10 / B         |

| INDOOR UNITS                                   |                   | ST FLO 9 DCI | ST FLO 12 DCI | ST FLO 18 DCI | ST FLO 24 DCI | ST FLO 30 DCI |
|--|-------------------|--------------|---------------|---------------|---------------|---------------|
| Airflow (LS/MS/HS)                             | m <sup>3</sup> /h | 350/460/570  | 370/480/580   | 620/760/850   | 700/850/1000  | 700/1150/1400 |
| Acoustic pressure to 1m (LS/HS) <sup>(3)</sup> | dB(A)             | 26/38        | 26/39         | 34/45         | 34/47         | 34/47         |
| Dehumidification                               | l/h               | 1            | 1.5           | 2             | 2.5           | 2.5           |
| Net Weight                                     | kg                | 11           | 11            | 15.5          | 15            | 18.5          |
| Dimensions (WxDxH)                             | mm                | 810x190x285  | 810x190x285   | 1060x210x295  | 1060x210x295  | 1200x236x340  |

| OUTDOOR UNITS                   |                   | GC 9 DCI           | GC 12 DCI          | GC 18 DCI          | GC 24 DCI               | GC 30 DCI               |
|---------------------------------|-------------------|--------------------|--------------------|--------------------|-------------------------|-------------------------|
| Airflow                         | m <sup>3</sup> /h | 1780               | 1780               | 2160               | 3330                    | 3350                    |
| Acoustic pressure to 1 m        | dB(A)             | 50                 | 52                 | 53                 | 55                      | 56                      |
| Type of compressor              |                   | Rotary DC Inverter | Rotary DC Inverter | Scroll DC Inverter | Twin Rotary DC Inverter | Twin Rotary DC Inverter |
| Winter / Summer operating limit |                   | - 15 °C / + 43 °C  |                    |                    |                         |                         |
| Weight                          | kg                | 40                 | 40                 | 40                 | 65                      | 65                      |
| Dimensions (WxDxH)              | mm                | 795x290x610        | 795x290x610        | 795x290x610        | 950x412x835             | 950x412x835             |

### Specifications of connections between units

| Power supply                     |                 | Indoor | Indoor | Indoor | Indoor | Indoor |
|----------------------------------|-----------------|--------|--------|--------|--------|--------|
| Power supply side                |                 |        |        |        |        |        |
| Power cable section              | mm <sup>2</sup> | 3x1.5  | 3x1.5  | 3x2.5  | 3x2.5  | 3x2.5  |
| Fuse am                          | A               | 15     | 15     | 20     | 20     | 20     |
| Electrical connections Ind./Out. | mm <sup>2</sup> | 4x1.5  | 4x1.5  | 4x2.5  | 4x2.5  | 4x2.5  |
| Linking pipes                    |                 |        |        |        |        |        |
| Max. length                      | m               | 20     | 20     | 30     | 30     | 30     |
| Max. height                      | m               | 10     | 10     | 15     | 15     | 15     |
| Suction pipe Diameter            | Inches          | 3/8"   | 3/8"   | 1/2"   | 5/8"   | 5/8"   |
| Liquid pipe Diameter             | Inches          | 1/4"   | 1/4"   | 1/4"   | 3/8"   | 3/8"   |

(1) Nominal heating capacity: international conditions 20°C/12°C damp - Outdoor air: 7°C/6°C damp. (2) Nominal cooling capacity: international conditions (Standards NF EN 255.2 / 814.2) - 27°C/19°C damp - Outdoor air: 35°C/24°C damp. (3) Overall acoustic pressure in dB(A) (1 m) under nominal conditions: outdoor unit in a free field over a reflecting plane - Indoor unit: installed in an average sized room, (PV-0.5s reverberation).

# Airwell



your approved *Airwell* distributor

ACE MARKETING - 1 bis, av. du 8 mai 1945 - Saint-Quentin-en-Yvelines  
 F - 78284 Guyancourt Cedex  
 Fax : +33 (0) 1 39 44 65 17 - Tél. : +33 (0) 1 39 44 78 00  
[www.airwell.com](http://www.airwell.com)